

Schindler 9300. The Escalator.  
Enjoy moving.



# We set a new standard for mobility

## Schindler 9300

### Protect and support

Safety and reliability—these are our top commitments.

### Respect and optimize

Reduced energy with increased efficiency—this is our design approach.

### Enlarge and compose

New compact design for more building space.

### Enhanced beauty

Enhance and complement aesthetics to suit your architectural needs.



# Protect and support

Safety and reliability are our prime commitments. Schindler 9300 offers state-of-the-art safety solutions to protect and support your passengers.



## Advanced safety solutions

Schindler escalators are designed to meet the most stringent safety requirements over their entire product life cycles—from production through installation to maintenance. The new Schindler 9300 escalator provides enhanced safety features to protect your passengers.

### Code compliance

The TÜV-certified Schindler 9300 escalator meets all international standards including EN 115, GB 16899, HK-COP, ANSI, and others.

### Passenger guidance

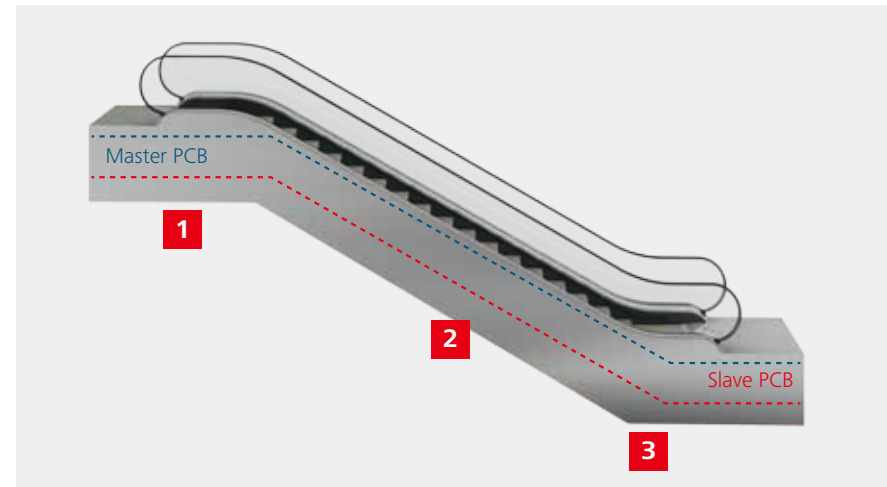
Schindler 9300 is designed to guide young and elderly passengers safely on their way to the next floor. Full visual guidance is provided by moving LED direction indicators **1**, fire-resistant step demarcations **2**, yellow signal combs **3**, and LED step gap lighting **4**.

### Intelligent braking system

With the brake torque adapted to the direction of travel, Schindler's unique braking system minimizes the risk of passengers falling during emergency stops.

### Built-in system safety

The MICONIC F escalator controller double-checks each safety device in real time. Speed and direction are monitored on the motor shaft **1**, step band **2**, and handrail **3**. By monitoring three separate components, a failure-free anti-reversal check is ensured.





Would you like more information on safety?  
Please consult the Schindler escalator safety  
brochure *State of the Art*.

## Strong, durable components

Schindler 9300 components are selected to secure high reliability and long service life. It is the key components which make the difference.

### Improved compact and reinforced truss

The new truss design with open profiles provides long-lasting corrosion resistance of up to 40 years. The vibration-isolated end supports eliminate sound transmission to the building.

### Break-resistant aluminum compact steps

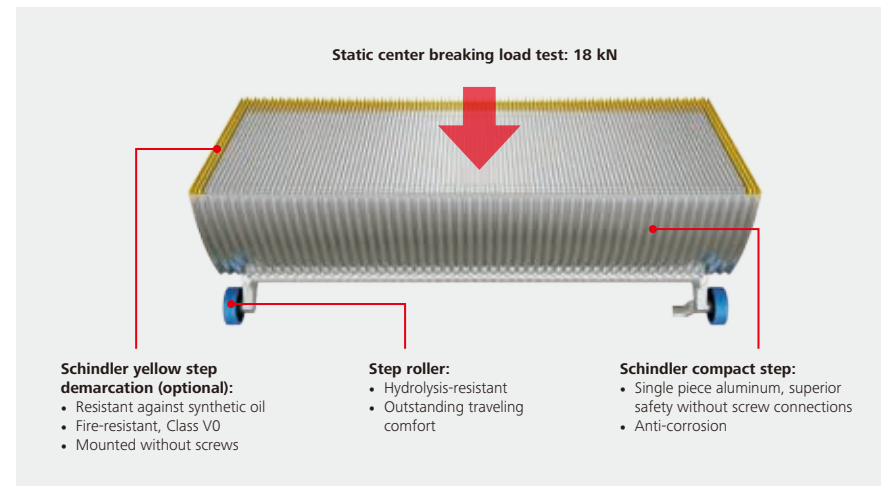
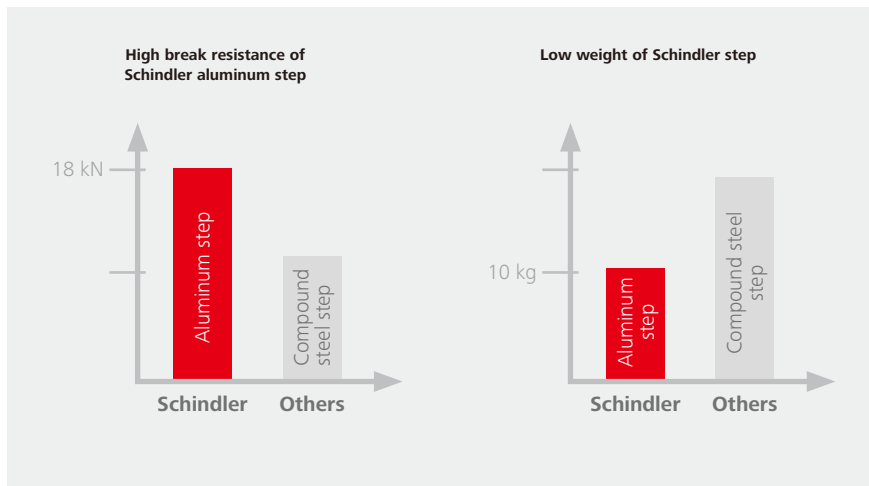
Steps are the most important safety component. The Schindler monoblock step provides significantly higher break resistance at substantially lower step weight compared to multipart compound steel steps.

### Ergonomic handrail with increased breaking load

Even small hands can comfortably hold the new ergonomic handrail. The new design combines high flexibility with strength and ensures a long service life.

### Durable drive and step chains

Schindler drive and step chains comply with national and international standards. The lubrication system is controlled by MICONIC F, which ensures a long service life and high operational efficiency.







# Respect and optimize

Reduced energy with increased efficiency. Our new drive system, in combination with three ECO operating modes, offers a high-performance mobility solution. For Schindler 9300, this ensures an extended lifespan, a reduced CO<sub>2</sub> footprint, and an ISO energy rating of A+++<sup>1)</sup>.



<sup>1)</sup>In accordance with the ISO 25745-1/3 standard; for more details, see the footnote on ISO 25745-1/3 on the next page.

## Total drive efficiency in every detail

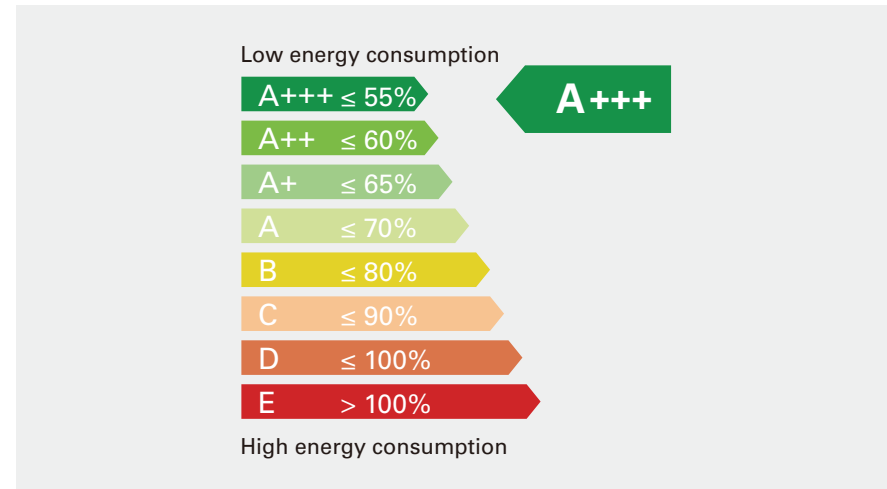
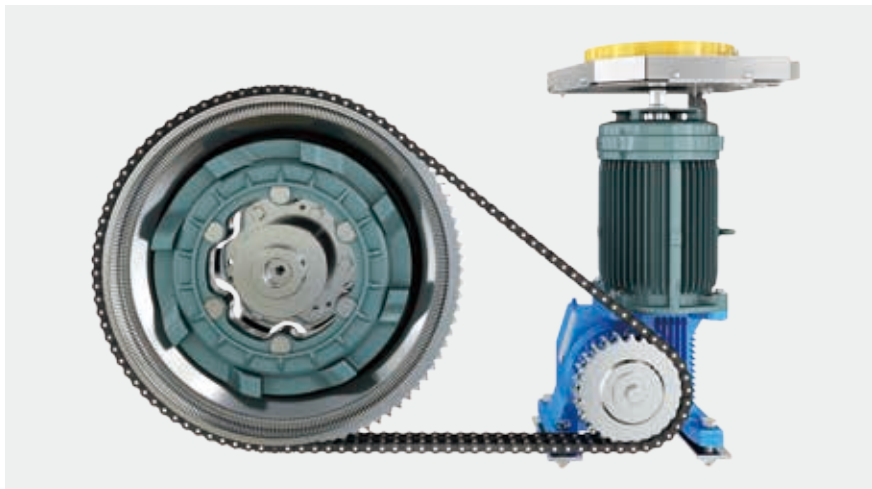
Each individual drive component (gearbox, motor, brake, flywheel, and drive chains) is designed to save energy. Schindler 9300 is designed to meet your LEED or BREEAM building certification requirements.

### Innovative drive system design

The new drive system family of Schindler 9300 enables higher vertical rises and ensures a longer service life, at the same power level.

### Choose our optional premium power package for optimized energy efficiency with IE3 motor and high-efficiency gear

For Schindler 9300, with the IE3<sup>1)</sup> motor and the high-efficiency gear, the energy efficiency class (measured by the ISO 25745-1/3 standard) is A+++<sup>2)</sup>.



<sup>1)</sup> The efficiency factor of the IE3 motor corresponds to IEC 60034-30.

<sup>2)</sup> The ISO 25745-1/3 standard regarding energy calculation and classification of escalators and moving walks is established by the International Organization for Standardization (ISO). The ISO 25745-1/3 classes range from "A+++ to "E," with class "A+++ being the most energy-efficient class. The given result is based on measurements and valid for a Schindler 9300 escalator with a step width of 1 m, a rise of 3,97 m, an angle of inclination of 30°, a speed of 0.5 m/s, and with optional energy-saving features. The ISO 25745-1/3 classification and energy consumption of individual installations may deviate from this result, e.g., due to different or additional customer options and/or different configurations.

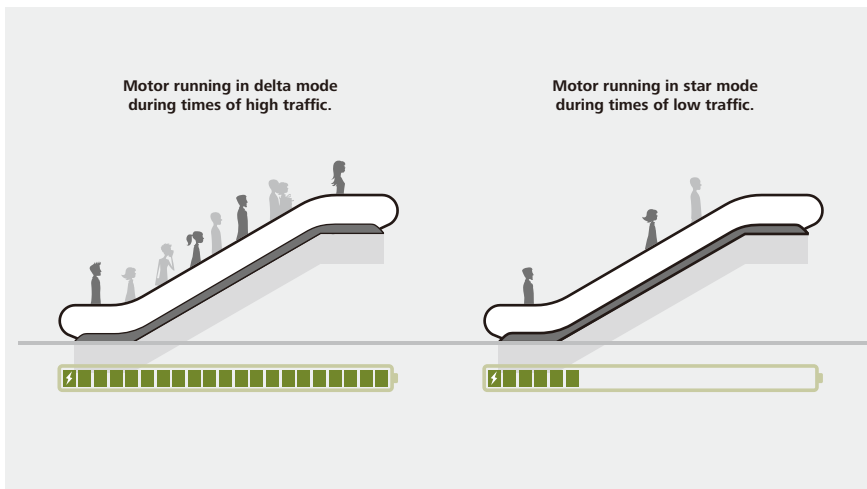


Would you like more information on efficiency? Please consult the Schindler escalator efficiency brochure *Performance is not a question of consumption.*

## Smart power management with clever eco-options

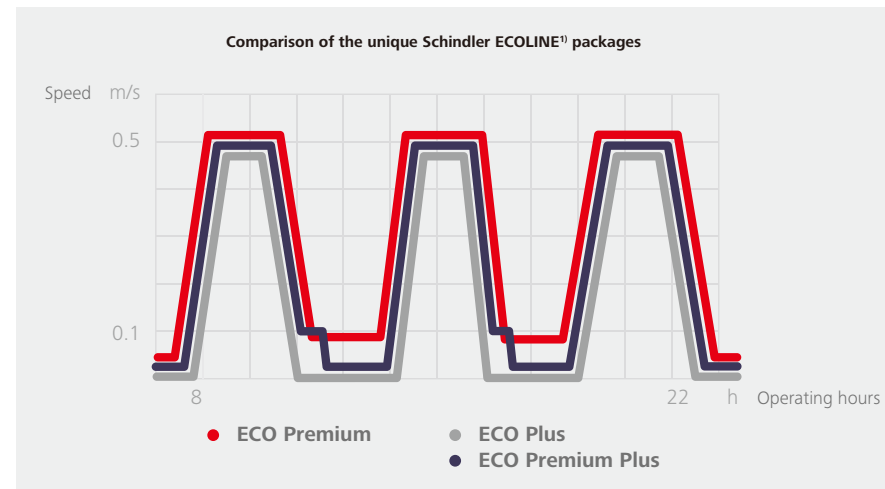
### Schindler's ECO system for smart power savings

Load determination is optimized by constantly checking the load of passengers on the escalator. As a result, the motor operates according to the load, i.e., the number of passengers, in an efficient power window.



### Schindler ECOLINE<sup>1)</sup> power management packages: clever eco-options for low-cost operation

In addition to the standard ECO saving system, optional energy-saving features are available: stop-&-go operation, stand-by speed operation, or a combination of both features allow substantial additional energy savings.



<sup>1)</sup> ECO = Energy savings in Continuous Operation



# Enlarge and compose

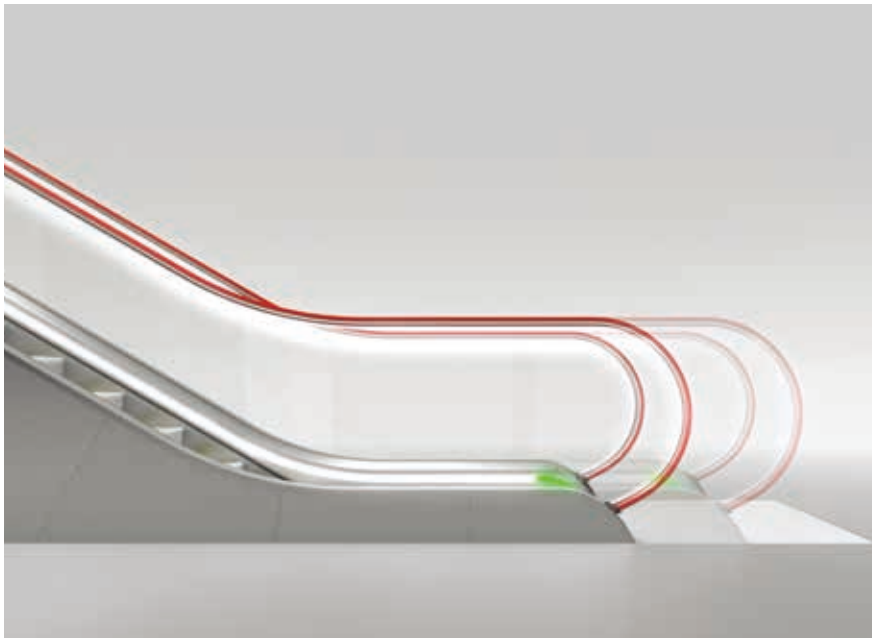
New compact design for more building space. More space at entry and exit areas, reduced overall width, and 3D automatic planning tools enable efficient escalator positioning and provide more rental space in your building.



## Enlarge rental space

### More space at entry and exit

The balustrade has been shortened by 336 mm so that more space can be offered in front of the escalator at each landing.



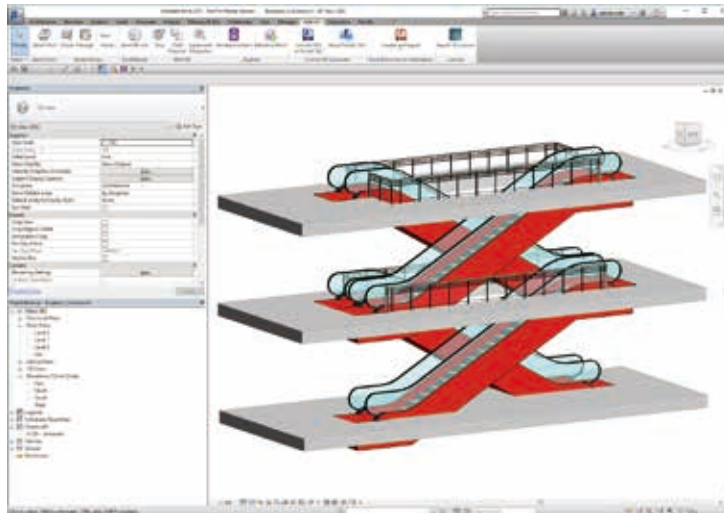
Designed for optimizing space

### Reduction of overall escalator width

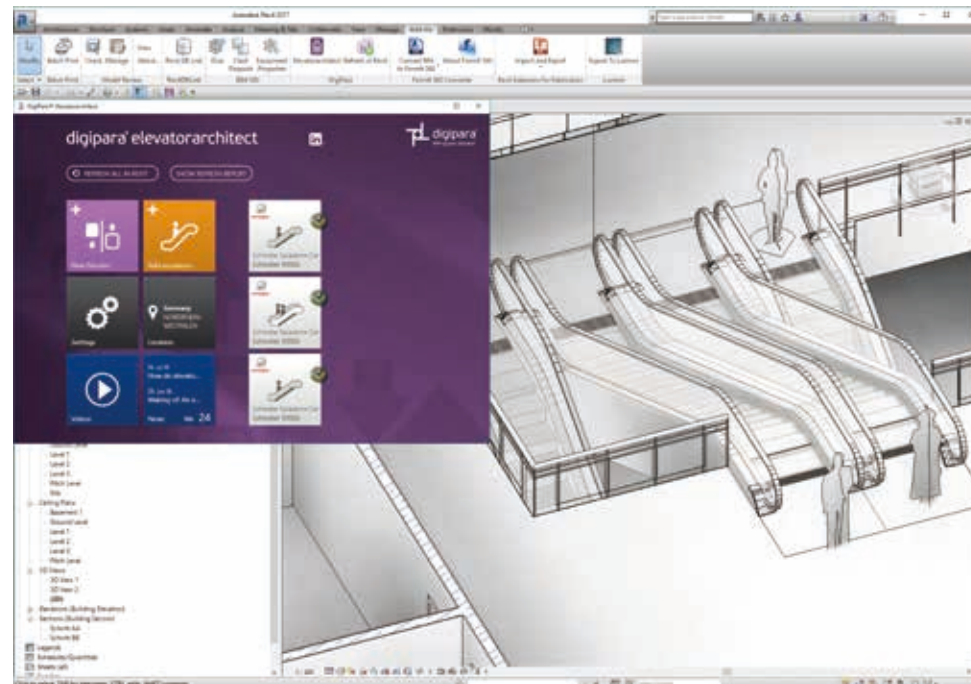
While retaining the same nominal step width, the overall width of the escalator has been reduced by 75 mm, resulting in more rental space in your building.



## Compose your building



Schindler provides up-to-date planning tools for architects, planners, and consultants. 2D drawings and 3D models are provided by the DigiPara Elevatorarchitect plug-in for Autodesk Revit available at the Autodesk App Store.







# Enhanced beauty

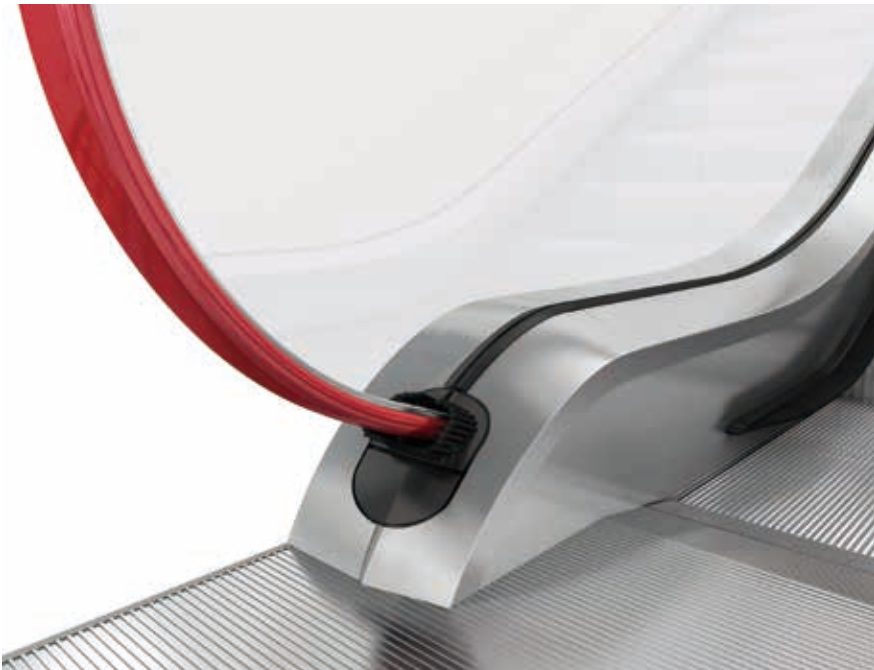
Contemporary aesthetics complement your architectural needs. Timeless design combined with a range of unique decorative options can distinctively enhance your building environment.





## Premium beauty package

- 1 Direction indicator
- 2 RGB LED balustrade & skirt lighting with 16.7 million individual colors
- 3 Triangular combplate lighting
- 4 Stainless-steel newel end cap



Stainless-steel newel end cap



Polyamide newel end cap



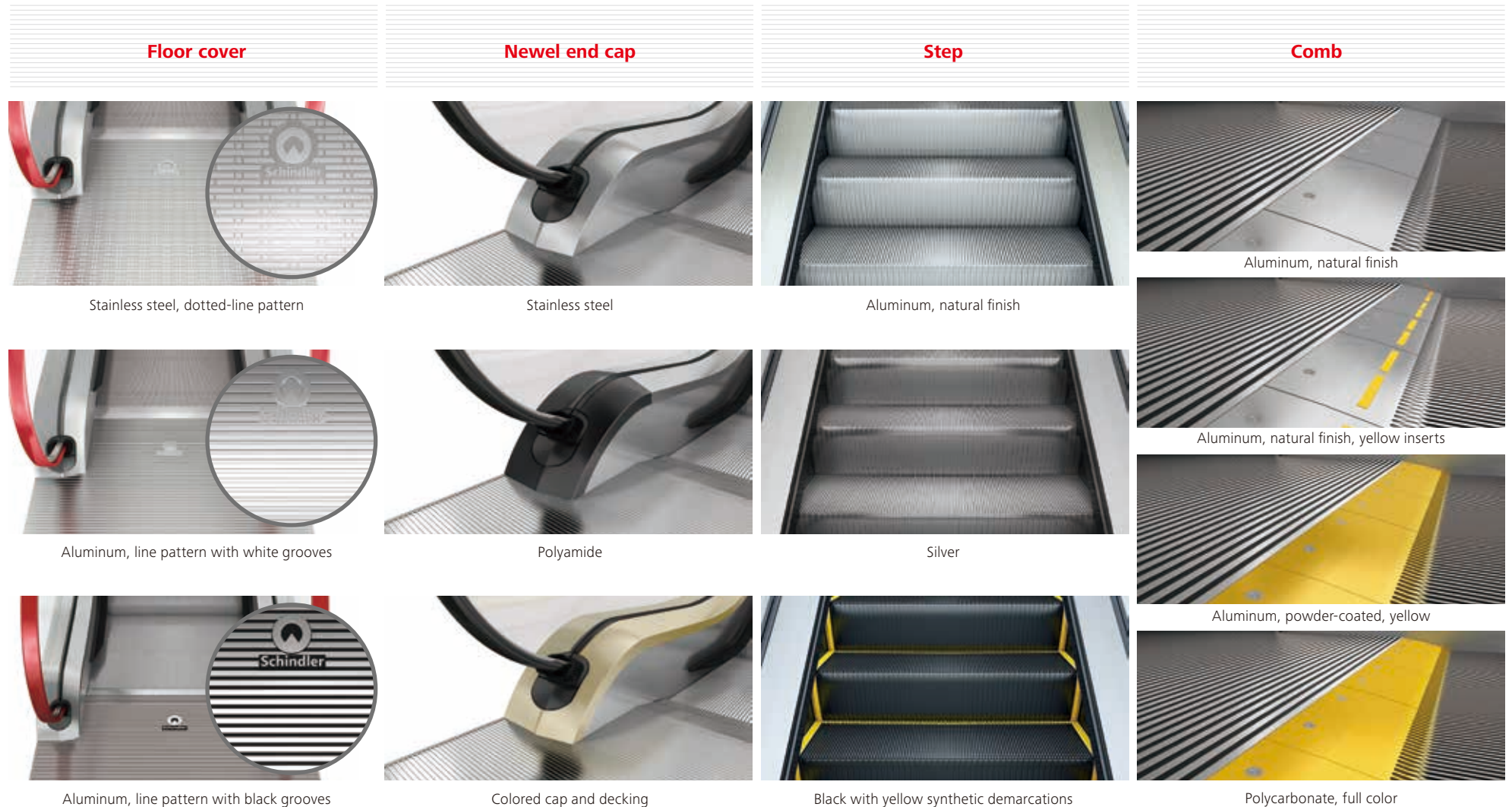
Aluminum floor cover with line pattern (white anodized grooves)



Stainless-steel floor cover with dotted-line pattern

# Elegant adaptable design options

Schindler 9300 escalator offers not only timeless basic equipment, but also distinctive and highly customizable design options which easily adapt to smaller commercial areas and high-end shopping centers.





Would like to design an escalator yourself and review its appearance? Please scan the QR code on this page with an iPad and install the Schindler Escalator app. Then you can easily design your own escalator and view its 3D effect with the 3D Configurator in the Configurator model.

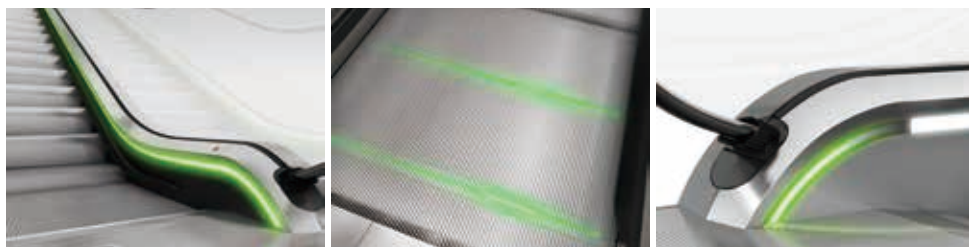
### LED lighting



Skirt lighting, light strips

Skirt lighting, spots

Comb lighting



Skirt lighting, green

Step gap lighting

Integrated direction indicator



Balustrade lighting, blue

Balustrade lighting, purple

Outer decking direction indicator

### Handrail



Black

Green



Red

Orange



Antimicrobial handrail

Safety signage handrail

### Skirt panel



Sheet steel, black anti-friction



Stainless steel

**Note:**  
Specifications, options, and colors are subject to change. All options illustrated in this brochure are representations only. The samples shown may vary from the original in color and material.

# High-quality products and global services

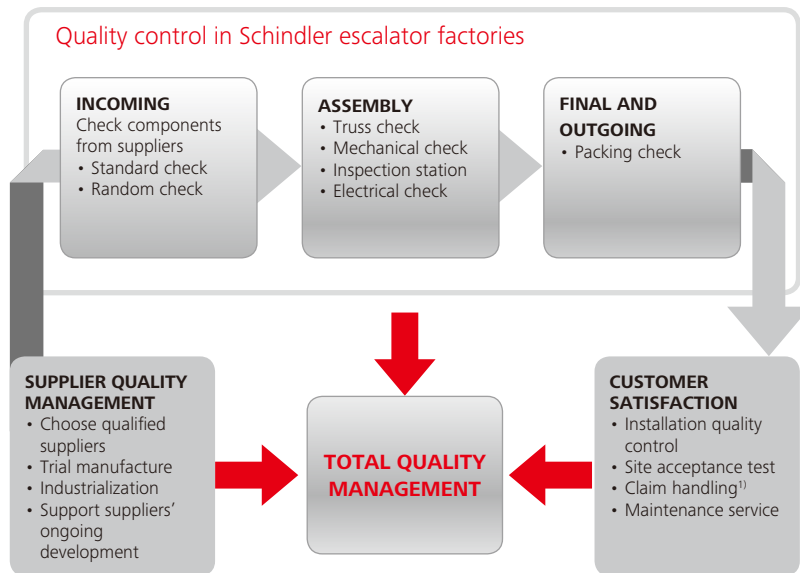
## Unified global production system boasts European design concepts

Across the globe, Schindler operates nine production units for escalators and key escalator components like steps, trusses, and controllers. The Shanghai Works factory is by far the biggest escalator plant in the industry. All our factories comply with global assembly and quality standards.

## Customer-focused maintenance service

Schindler not only has a standard and strict maintenance process in place, but also guarantees global spare parts supply. Maintaining your escalator using Schindler manufactured spare parts, you can be confident it will stay in excellent working order.

## Integrated TQM system ensures excellence in quality

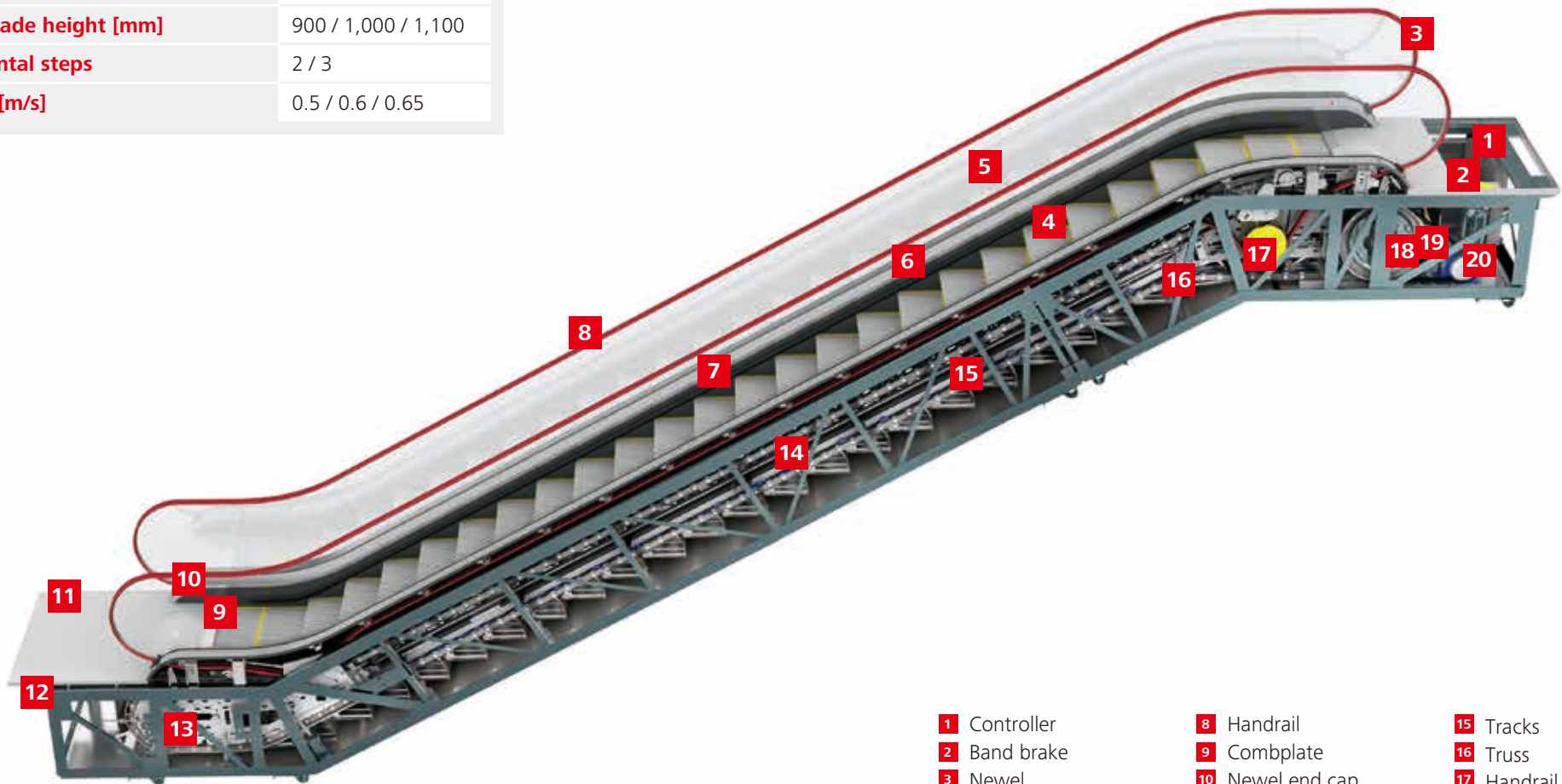


<sup>1)</sup> In case of claims for damaged or missing components, the factory's special claims handling team will help you analyze them.



# Supporting details for easy planning

|                                |                     |
|--------------------------------|---------------------|
| Nominal step width [mm]        | 600 / 800 / 1,000   |
| Angle of inclination [degrees] | 30 / 35             |
| Max. rise H [m]                | 13                  |
| Balustrade height [mm]         | 900 / 1,000 / 1,100 |
| Horizontal steps               | 2 / 3               |
| Speed [m/s]                    | 0.5 / 0.6 / 0.65    |



- |                              |                           |                          |
|------------------------------|---------------------------|--------------------------|
| <b>1</b> Controller          | <b>8</b> Handrail         | <b>15</b> Tracks         |
| <b>2</b> Band brake          | <b>9</b> Combplate        | <b>16</b> Truss          |
| <b>3</b> Newel               | <b>10</b> Newel end cap   | <b>17</b> Handrail drive |
| <b>4</b> Steps               | <b>11</b> Floor covers    | <b>18</b> Main shaft     |
| <b>5</b> Balustrade          | <b>12</b> End support     | <b>19</b> Duplex chain   |
| <b>6</b> Inner/outer decking | <b>13</b> Tension station | <b>20</b> Drive unit     |
| <b>7</b> Skirting            | <b>14</b> Step chain      |                          |

# Schindler 9300

## 30° inclination, rise up to 6 m

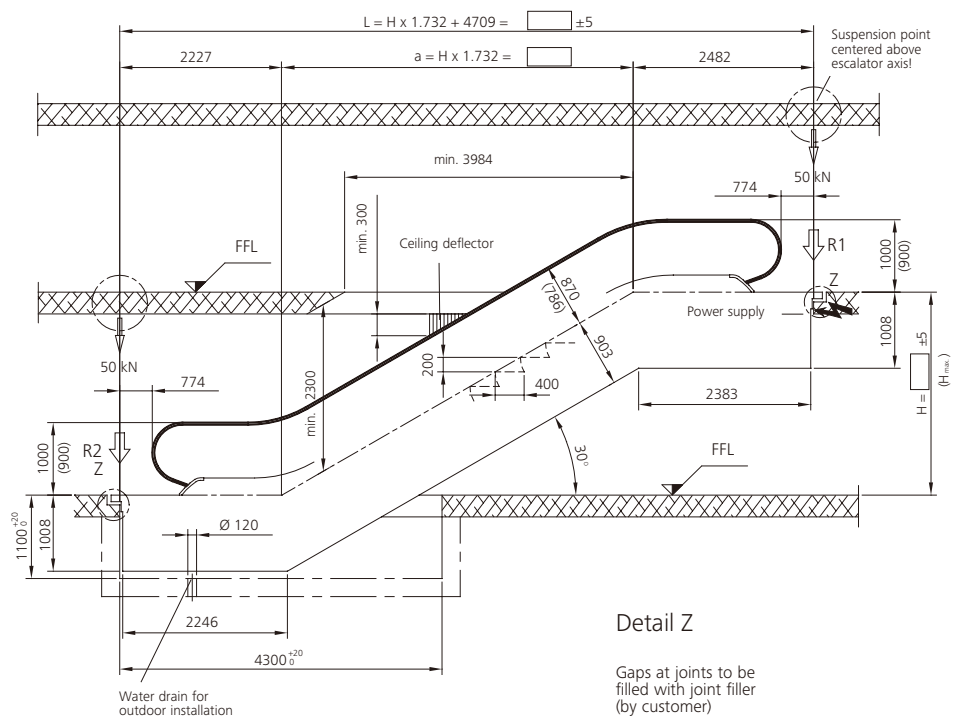
**Balustrade:**  
design E

**Balustrade height:**  
900 / 1,000 / 1,100 mm

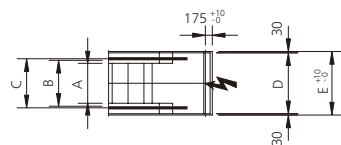
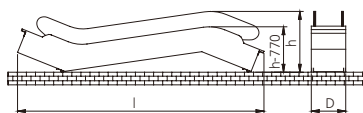
**Step width:**  
600 / 800 / 1,000 mm

**Step run:**  
2 horizontal steps

**Transition radius:**  
top/bottom: 1.0 m / 1.0 m

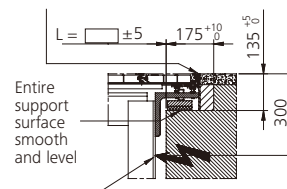


Transportation dimensions



Detail Z

Gaps at joints to be filled with joint filler (by customer)



Inlet for lighting and power circuits centered at upper end, through front face

**Note:**

All dimensions in mm.  
Observe national regulations!  
Subject to change.

| Step width [mm]                      | 600   | 800   | 1,000 |
|--------------------------------------|-------|-------|-------|
| <b>A:</b> Step width                 | 600   | 800   | 1,000 |
| <b>B:</b> Width between handrails    | 750   | 950   | 1,150 |
| <b>C:</b> Handrail outer distance    | 894   | 1,094 | 1,294 |
| <b>D:</b> Width of escalator         | 1,065 | 1,265 | 1,465 |
| <b>E:</b> Width of pit               | 1,125 | 1,325 | 1,525 |
| <b>H<sub>max</sub>:</b> Maximum rise | 6,000 | 6,000 | 6,000 |

| Step width [mm] | Rise [mm] | Weight [kN] | Support loads |         | Transp. dimensions Balustrade height 1,000 |        |
|-----------------|-----------|-------------|---------------|---------|--|--------|
|                 |           |             | R1 [kN]       | R2 [kN] | h [mm]                                     | l [mm] |
| <b>600</b>      | 3,000     | 52          | 44            | 38      | 2,790                                      | 10,830 |
|                 | 3,500     | 56          | 47            | 41      | 2,810                                      | 11,820 |
|                 | 4,000     | 59          | 50            | 44      | 2,840                                      | 12,810 |
|                 | 4,500     | 62          | 53            | 47      | 2,850                                      | 13,800 |
|                 | 5,000     | 65          | 56            | 50      | 2,870                                      | 14,800 |
|                 | 5,500     | 69          | 58            | 53      | 2,880                                      | 15,790 |
| <b>800</b>      | 3,000     | 55          | 50            | 45      | 2,790                                      | 10,830 |
|                 | 3,500     | 59          | 54            | 48      | 2,810                                      | 11,820 |
|                 | 4,000     | 62          | 57            | 52      | 2,840                                      | 12,810 |
|                 | 4,500     | 66          | 61            | 55      | 2,850                                      | 13,800 |
|                 | 5,000     | 69          | 64            | 58      | 2,870                                      | 14,800 |
|                 | 5,500     | 73          | 68            | 62      | 2,880                                      | 15,790 |
| <b>1,000</b>    | 3,000     | 59          | 57            | 51      | 2,790                                      | 10,830 |
|                 | 3,500     | 62          | 61            | 55      | 2,810                                      | 11,820 |
|                 | 4,000     | 66          | 65            | 59      | 2,840                                      | 12,810 |
|                 | 4,500     | 70          | 69            | 63      | 2,850                                      | 13,800 |
|                 | 5,000     | 73          | 73            | 67      | 2,870                                      | 14,800 |
|                 | 5,500     | 81          | 79            | 73      | 2,880                                      | 15,790 |
| 6,000           | 85        | 83          | 77            | 2,890   | 16,790                                     |        |



# Schindler 9300

## 35° inclination, rise up to 6 m

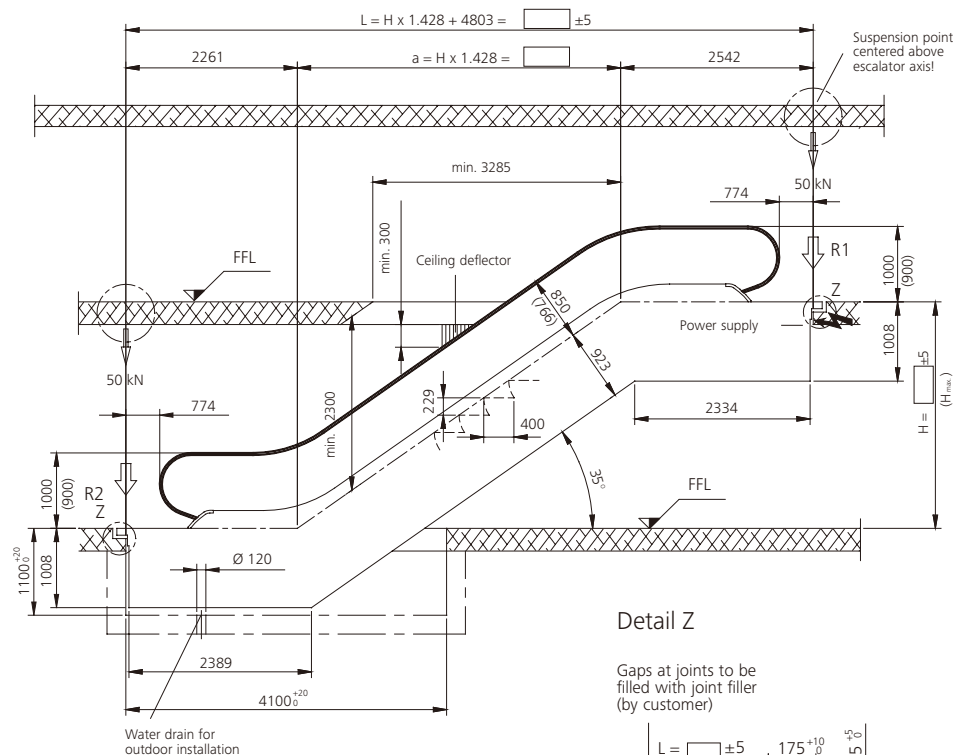
**Balustrade:**  
design E

**Balustrade height:**  
900 / 1,000 / 1,100 mm

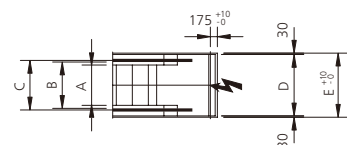
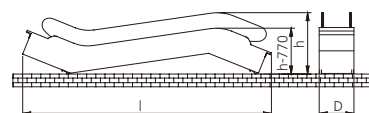
**Step width:**  
600 / 800 / 1,000 mm

**Step run:**  
2 horizontal steps

**Transition radius:**  
top/bottom: 1.0 m / 1.0 m

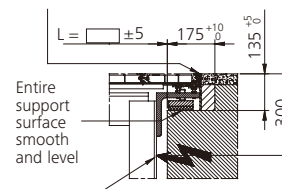


Transportation dimensions



Detail Z

Gaps at joints to be filled with joint filler (by customer)



Inlet for lighting and power circuits centered at upper end, through front face

**Note:**

All dimensions in mm.  
Observe national regulations!  
Subject to change.

| Step width [mm]                      | 600   | 800   | 1,000 |
|--------------------------------------|-------|-------|-------|
| <b>A:</b> Step width                 | 600   | 800   | 1,000 |
| <b>B:</b> Width between handrails    | 750   | 950   | 1,150 |
| <b>C:</b> Handrail outer distance    | 894   | 1,094 | 1,294 |
| <b>D:</b> Width of escalator         | 1,065 | 1,265 | 1,465 |
| <b>E:</b> Width of pit               | 1,125 | 1,325 | 1,525 |
| <b>H<sub>max</sub>:</b> Maximum rise | 6,000 | 6,000 | 6,000 |

| Step width<br>[mm] | Rise<br>[mm] | Weight<br>[kN] | Support loads |            | Transp. dimensions<br>Balustrade height<br>1,000 |           |
|--------------------|--------------|----------------|---------------|------------|--|-----------|
|                    |              |                | R1<br>[kN]    | R2<br>[kN] | h<br>[mm]  | l<br>[mm] |
| 600                | 3,000        | 49             | 41            | 35         | 2,870  | 10,070    |
|                    | 3,500        | 52             | 44            | 38         | 2,910  | 10,920    |
|                    | 4,000        | 55             | 46            | 40         | 2,930  | 11,780    |
|                    | 4,500        | 58             | 49            | 43         | 2,950  | 12,640    |
|                    | 5,000        | 60             | 51            | 45         | 2,970  | 13,500    |
|                    | 5,500        | 63             | 53            | 48         | 2,980  | 14,360    |
| 800                | 3,000        | 52             | 47            | 41         | 2,870  | 10,070    |
|                    | 3,500        | 55             | 50            | 44         | 2,910  | 10,920    |
|                    | 4,000        | 58             | 53            | 47         | 2,930  | 11,780    |
|                    | 4,500        | 61             | 56            | 50         | 2,950  | 12,640    |
|                    | 5,000        | 64             | 59            | 53         | 2,970  | 13,500    |
|                    | 5,500        | 67             | 62            | 56         | 2,980  | 14,360    |
| 1,000              | 3,000        | 55             | 53            | 47         | 2,870  | 10,070    |
|                    | 3,500        | 58             | 57            | 51         | 2,910  | 10,920    |
|                    | 4,000        | 62             | 60            | 54         | 2,930  | 11,780    |
|                    | 4,500        | 65             | 63            | 58         | 2,950  | 12,640    |
|                    | 5,000        | 68             | 67            | 61         | 2,970  | 13,500    |
|                    | 5,500        | 71             | 70            | 64         | 2,980  | 14,360    |
| 6,000              | 74           | 74             | 68            | 3,000      | 15,270   |           |

# Schindler 9300

## 30° inclination, rise up to 8.5 m

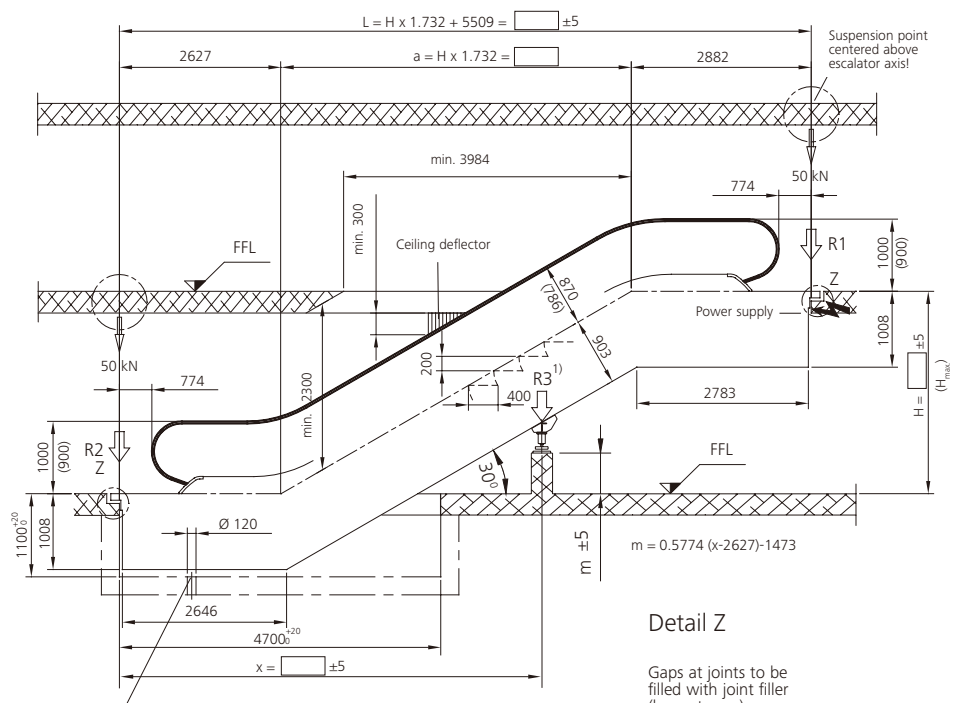
**Balustrade:**  
design E

**Balustrade height:**  
900 / 1,000 / 1,100 mm

**Step width:**  
600 / 800 / 1,000 mm

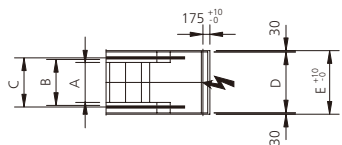
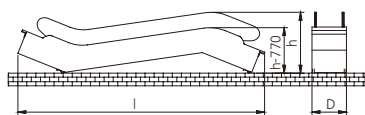
**Step run:**  
3 horizontal steps

**Transition radius:**  
top/bottom: 1.0 m / 1.0 m



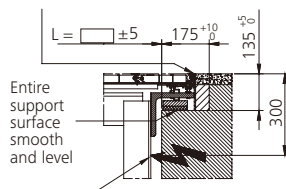
Water drain for outdoor installation

Transportation dimensions



Detail Z

Gaps at joints to be filled with joint filler (by customer)



Inlet for lighting and power circuits centered at upper end, through front face

**Note:**

All dimensions in mm.  
Observe national regulations!  
Subject to change.

| Step width [mm]                 | 600   | 800   | 1,000 |
|---------------------------------|-------|-------|-------|
| A: Step width                   | 600   | 800   | 1,000 |
| B: Width between handrails      | 750   | 950   | 1,150 |
| C: Handrail outer distance      | 894   | 1,094 | 1,294 |
| D: Width of escalator           | 1,065 | 1,265 | 1,465 |
| E: Width of pit                 | 1,125 | 1,325 | 1,525 |
| H <sub>max</sub> : Maximum rise | 8,500 | 8,500 | 8,500 |

| Step width [mm] | Rise [mm] | Weight [kN] | Support loads |         |               | Transp. dimensions Balustrade height 1000 |               |
|-----------------|-----------|-------------|---------------|---------|---------------|---|---------------|
|                 |           |             | R1 [kN]       | R2 [kN] | R3 [kN]       | h [mm]                                    | l [mm]        |
| 600             | 3,000     | 52          | 44            | 38      | -             | 2,900                                     | 11,570        |
|                 | 4,000     | 59          | 50            | 44      | -             | 2,960                                     | 13,550        |
|                 | 5,000     | 65          | 56            | 50      | -             | <sup>2)</sup>                             | <sup>2)</sup> |
|                 | 6,000     | 72          | 61            | 56      | -             | <sup>2)</sup>                             | <sup>2)</sup> |
|                 | 7,000     | 88          | 42            | 34      | 68            | <sup>2)</sup>                             | <sup>2)</sup> |
|                 | 8,000     | 94          | 44            | 36      | 76            | <sup>2)</sup>                             | <sup>2)</sup> |
| 800             | 3,000     | 55          | 50            | 45      | -             | 2,850                                     | 11,610        |
|                 | 4,000     | 62          | 57            | 52      | -             | 2,910                                     | 13,580        |
|                 | 5,000     | 69          | 64            | 58      | -             | 2,950                                     | 15,570        |
|                 | 6,000     | 76          | 71            | 65      | -             | <sup>2)</sup>                             | <sup>2)</sup> |
|                 | 7,000     | 93          | 47            | 39      | 82            | <sup>2)</sup>                             | <sup>2)</sup> |
|                 | 8,000     | 100         | 49            | 41      | 92            | <sup>2)</sup>                             | <sup>2)</sup> |
| 1,000           | 3,000     | 59          | 57            | 51      | -             | 2,850                                     | 11,610        |
|                 | 4,000     | 66          | 65            | 59      | -             | 2,910                                     | 13,580        |
|                 | 5,000     | 73          | 73            | 67      | -             | 2,950                                     | 15,570        |
|                 | 6,000     | 85          | 83            | 77      | -             | <sup>2)</sup>                             | <sup>2)</sup> |
|                 | 7,000     | 99          | 52            | 44      | 96            | <sup>2)</sup>                             | <sup>2)</sup> |
|                 | 8,000     | 106         | 55            | 47      | 107           | <sup>2)</sup>                             | <sup>2)</sup> |
| 8,500           | 110       | 56          | 48            | 113     | <sup>2)</sup> | <sup>2)</sup>                             |               |

<sup>1)</sup> For H > 6 m, an intermediate support may be required. Please consult Schindler.

<sup>2)</sup> Delivery in 2 parts.

# Schindler 9300

## Type 15, 30° inclination, rise up to 13 m

**Balustrade:**  
design E

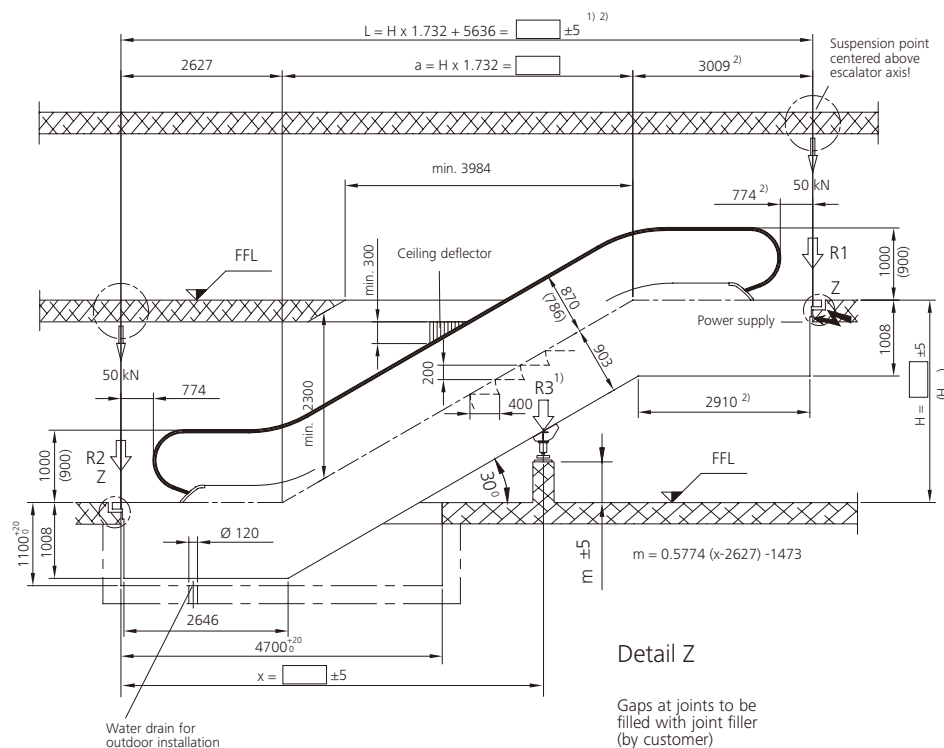
**Balustrade height:**  
900 / 1,000 / 1,100 mm

**Inclination:**  
30°

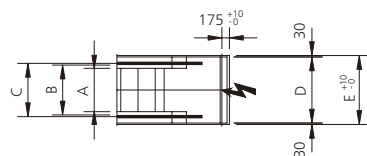
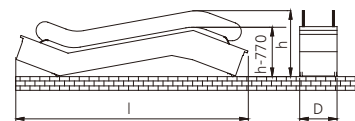
**Step width:**  
800 / 1,000 mm

**Step run:**  
3 horizontal steps

**Transition radius:**  
top/bottom: 1.5 m / 1.0 m

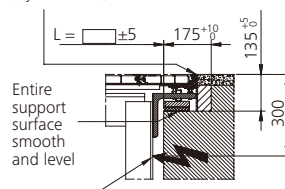


Transportation dimensions



Detail Z

Gaps at joints to be filled with joint filler (by customer)



Inlet for lighting and power circuits centered at upper end, through front face

**Note:**  
All dimensions in mm.  
Observe national regulations!  
Subject to change.

| Step width [mm]                      | 800    | 1,000  |
|--------------------------------------|--------|--------|
| <b>A:</b> Step width                 | 800    | 1,000  |
| <b>B:</b> Width between handrails    | 950    | 1,150  |
| <b>C:</b> Handrail outer distance    | 1,094  | 1,294  |
| <b>D:</b> Width of escalator         | 1,265  | 1,465  |
| <b>E:</b> Width of pit               | 1,325  | 1,525  |
| <b>H<sub>max</sub>:</b> Maximum rise | 13,000 | 13,000 |

| Step width [mm] | Rise H [mm] | Weight [kN] | Support loads |         |               | Transp. dimensions Balustrade height 1,000 |               |
|-----------------|-------------|-------------|---------------|---------|---------------|--|---------------|
|                 |             |             | R1 [kN]       | R2 [kN] | R3 [kN]       | h [mm]                                     | l [mm]        |
| 800             | 3,000       | 62          | 56            | 49      | -             | 2,930                                      | 11,690        |
|                 | 4,000       | 69          | 63            | 56      | -             | 3,000                                      | 13,670        |
|                 | 5,000       | 76          | 70            | 63      | -             | 3,050                                      | 15,650        |
|                 | 6,000       | 85          | 78            | 71      | -             | 3,080                                      | 17,630        |
|                 | 7,000       | 93          | 52            | 30      | 88            | <sup>3)</sup>                              | <sup>3)</sup> |
|                 | 8,000       | 101         | 55            | 33      | 97            | <sup>3)</sup>                              | <sup>3)</sup> |
|                 | 9,000       | 111         | 53            | 44      | 104           | <sup>3)</sup>                              | <sup>3)</sup> |
|                 | 10,000      | 119         | 56            | 47      | 114           | <sup>3)</sup>                              | <sup>3)</sup> |
|                 | 11,000      | 126         | 59            | 49      | 123           | <sup>3)</sup>                              | <sup>3)</sup> |
|                 | 12,000      | 133         | 61            | 52      | 133           | <sup>3)</sup>                              | <sup>3)</sup> |
| 1,000           | 3,000       | 66          | 63            | 57      | -             | 2,930                                      | 11,690        |
|                 | 4,000       | 100         | 49            | 41      | -             | 3,000                                      | 13,670        |
|                 | 5,000       | 103         | 50            | 42      | -             | 3,050                                      | 15,650        |
|                 | 6,000       | 59          | 57            | 51      | -             | 3,080                                      | 17,630        |
|                 | 7,000       | 99          | 59            | 34      | 103           | <sup>3)</sup>                              | <sup>3)</sup> |
|                 | 8,000       | 107         | 61            | 38      | 113           | <sup>3)</sup>                              | <sup>3)</sup> |
|                 | 9,000       | 118         | 60            | 50      | 121           | <sup>3)</sup>                              | <sup>3)</sup> |
|                 | 10,000      | 126         | 63            | 53      | 132           | <sup>3)</sup>                              | <sup>3)</sup> |
|                 | 11,000      | 140         | 69            | 60      | 142           | <sup>3)</sup>                              | <sup>3)</sup> |
|                 | 12,000      | 154         | 78            | 63      | 154           | <sup>3)</sup>                              | <sup>3)</sup> |
| 13,000          | 163         | 81          | 66            | 165     | <sup>3)</sup> | <sup>3)</sup>                              |               |

<sup>1)</sup> For H > 8.5 m, a second intermediate support may be required. Please consult Schindler.

<sup>2)</sup> For H > 8.5 m, a top extension of 417 mm is needed.

<sup>3)</sup> Delivery in 2 parts.

# You know where to find us. We look forward to seeing you.

For additional information and the location of your  
nearest Schindler branch, please visit:

**[www.schindler.com](http://www.schindler.com)**

This publication is for general informational purposes only and we reserve the right at any time to alter the services, product design, and specifications. No statement contained in this publication shall be construed as a warranty or condition, expressed or implied, as to any service or product, its specifications, its fitness for any particular purpose, merchantability, or quality nor shall be interpreted as a term or condition of any service or purchase agreement for the products or services contained in this publication. Minor differences between printed and actual colors may exist.